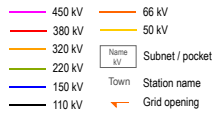


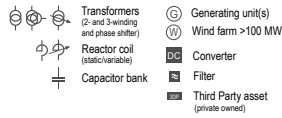
EHV Network of the Netherlands

National transmission grid, subnets and interconnectors

Line/cable and busbar voltage



Grid assets



Relevant notes for this release

- (1) Temporary / ad-hoc overhead line.
- (2) Provisional.
- (3) 380 kV installation bypassed due to major issues concerning the GIS switchgear. Actual status and availability may vary.

Voltages are represented by both color and the nominal value next to the busbars. The colors for 110 kV and up are identical to the ENTSO-E styling. For voltages below 110 kV, the standard of HoogspanningsNet is applied. The voltage interval color groups obey the NEN-IEC 60308 normative.

Important notices

The grid scheme depicts the AS-IS grid situation at the moment of the time stamp. New assets under construction are only depicted from their moment of commissioning. The grid scheme does not consider short unavailabilities in individual assets or small reconstructions lasting typically just a few weeks or months. Numbers indicate the nominal component capacity in MVA or MW for compensation. Values in brackets depict the physical design capacity of an asset which is confined to a lower operational capacity due to another limiting component or limiting factor elsewhere in the grid. All information in this grid scheme is public available data acquired by OSINT of numerous sources, direct request and/or fieldwork by volunteers. The scheme is administered with care, but do not use this scheme for critical decisions. Please consult operator TenneT TSO for critical applications.

* Values and/or abbreviations with an asterisk are unconfirmed or the data sources are inconsistent (different values).



31-03-2023

