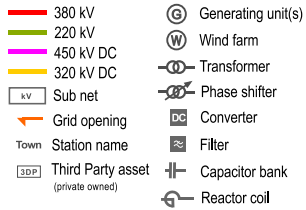


EHV Network of the Netherlands

National transmission grid and interconnectors



Numbers indicate the nominal component capacity in MVA or Mvar for compensation.

Values in brackets depict the physical design capacity of an assets which is confined to a lower operational capacity due to another limiting component or limiting factor.

* Values with an asterisk are unconfirmed or the data sources are inconsistent (different values)

Relevant notes

- (1) Temporary / ad-hoc overhead line.
- (2) Provisory.
- (3) 380 kV installation bypassed due to major issues concerning the GIS switchgear. Actual status and availability may vary.
- (4) Transformer out of service due to fire. Date of replacement unknown.
- (5) Eemshaven Filter station commissioning unconfirmed. No information available about opening or filter characteristics.



15-07-2021

